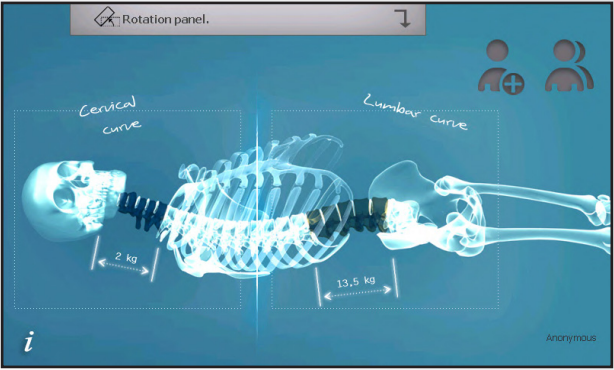


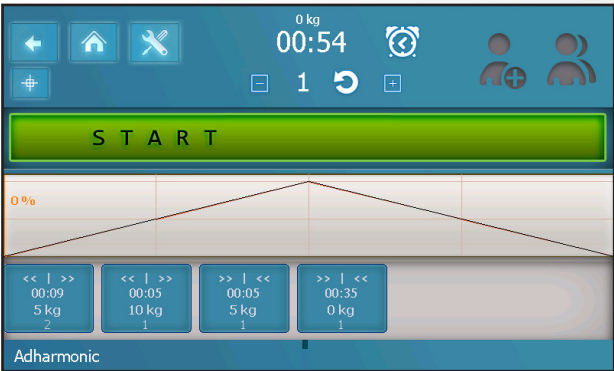
Angle adjustment for lumbar and cervical traction.



Selection of the zone of traction.



Preset and editable parameters.



Screen during treatment.



Watch the VIDEO!



AC International s.r.l.

Via della Canapa 22 - 44042 Cento (FE) - Italy - Tel. +39 051 6836385 - Fax. +39 051 6831061 -  
Website: [www.cosmogamma.com](http://www.cosmogamma.com),  
Contact: [export@emildue.com](mailto:export@emildue.com)



# PLATINIUM TOTAL TRACTION TABLE

## 3D TRACTION LUMBAR/CERVICAL

- EXCEPTIONAL RANGE OF PRESET PROGRAMS
- POSSIBILITY OF WRITING USED-DEFINED PROGRAMS
- DIFFERENT STAGES (PHASES) OF THE SINGLE PROGRAMS ADJUSTABLE
- UPDATE SOLUTION FOR CERVICAL TRACTION
- 7" COLOR TOUCH SCREEN
- ELECTRICAL HEIGHT ADJUSTABLE
- HUGE DATABASE





**Platinum** is the ideal solution of traction treatment, for patients that suffer any lumbar pathology (e.g. discopathy, protrusion and hernia) and cervical pathology (e.g. neck pain, hernia, cervical sprain, etc).

This new traction bed is designed to allow treatment in 3 positions; flexion/extension, rotation and lateral flexion. The possibility to move the patient in three different ways allows the physiotherapist to carry on the treatment with a wide range of positions of the column.

To know how this particular bed works...

### What is a spinal decompression therapy?

It's a traction based on the relief from pain in the back and legs, or neck and arm. During this procedure, changing from distraction phase to rest one, the spinal disc could be isolated and put under negative pressure, causing a vacuum effect.

...it's better answer some questions first:

### Which are the spinal decompression effect?

The ones who suffer from back pain or neck pain caused from a damaged disc, could be helped by a spinal decompression therapy. These conditions include hernia, protuberant disc of the spinal column, like stenosis, sciatica, radiculitis.

### How this negative pressure can affect an injured disc?

During the spinal decompression, a negative pressure is done on the disc. Thank to this negative pressure, the material of the protuberant disc could be replaced and allow the healing.

### TECHNICAL DATA:

|                                 |                      |
|---------------------------------|----------------------|
| Power supply:                   | 160 W                |
| Power input:                    | 110-240 V / 50-60 Hz |
| Weight:                         | 145 Kg               |
| Dimensions (L x W):             | 227 x 73 cm          |
| Electronical adjustable Height: | 58-88 cm             |
| Safety Class:                   | I B                  |

### 3 Parts table with:

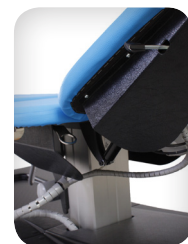
|  |               |
|--|---------------|
| - Section for head with adjustable position:       | -44° and +36° |
| - Section for chest                                |               |
| - Section for pelvic and legs adjustable position: |               |
| • Headrest:  | -44° and +36° |
| • Flexion/Extension:                               | -14° and +12° |
| • Adduction/Abduction:                             | -20° and +20° |
| • Internal/External rotation:                      | -12° and +12° |

|  |  |
|--|--|
| Kinds of traction:                         | constant and harmonious  |
| Maximum strenght of the cervical traction: | 18 Kg.   |
| Maximum strenght of lumbar traction:       | 90 Kg.   |
| Adjustable following parameters:           | type of traction, power, speed, escalation, time of treatment, active phase and break time |
| Possibility to program:                    | programmable traction phase sequence in a single operation                                 |
| Display:                                   | 7" color touch screen display  |
| Maximum load:                              | 150 Kg.  |

### SPECIFICATIONS:

The 3D bed Platinum offer the most refined performance for traction of mobilization/manipulation and new treatment. Its new design and features offer a wide range of treatment for spinal and cervical traction:

- Execution of a static and harmonius traction, that allows to change all parametres with the possibility of saving.
- Possibility to create and save the programs defined by the user.
- Patient database: patient information storage with the history of the tratement.
- 7" LCD colour touch screen for an intuitive and simple use of the device.
- Adjustment of the rotation and the lateral flexion of the bed through the use of the gas spring.
- Adjustable headrest with hole for the head and for extreme confort during the treatment.
- Precise control of the motor, to carry on a comfortable traction.
- Carry on the traction treatmentrange of positions of the column.



### STANDARD ACCESSORIES:

|                                      |            |
|--------------------------------------|------------|
| 2 pcs. - Belts [1]:                  | 08.022.003 |
| • one to stabilize the lumbar spine  |            |
| • one to stabilize the toracic spine |            |
| 1 pc. - Stool [2]                    | 08.501.003 |